

# ERASMUS

**Faculty of Transport Engineering  
University of Pardubice**

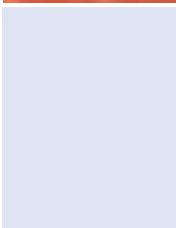
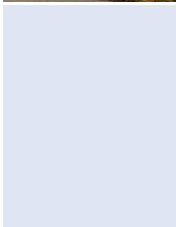
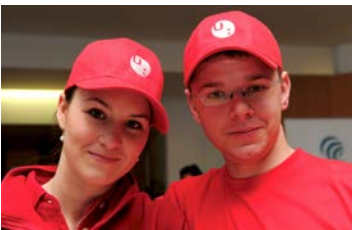


## Table of Contents:

Map. . . . .	3
What do we offer you? . . . . .	4
About the city of Pardubice. . . . .	5
The University of Pardubice . . . . .	6
Jan Perner Transport Faculty . . . . .	7
Department of Transport Management, Marketing and Logistics . . . . .	8
Department of Transport Means and Diagnostics . . . . .	9
Department of Electrical and Electronic Engineering and Signalling in Transport . . . . .	10
Department of Informatics in Transport . . . . .	11
Department of Transport Technology and Control. . . . .	12
Department of Mechanics, Materials and Machine Parts . . . . .	13
Department of Transport Structures . . . . .	14
Introduction to the studies . . . . .	15
Buddy System. . . . .	16
Application . . . . .	17
Vocabulary. . . . .	18



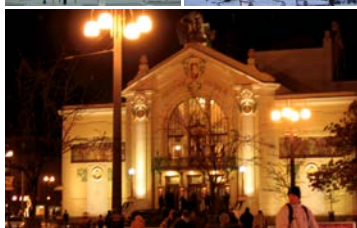
# What do we offer you?





## About the city of Pardubice

- **Historical centre** – Renaissance square, picturesque streets, dominant feature – the Green Gate, protected city heritage site since 1964
- **Pardubice castle** – Renaissance style
- **Culture** – East Bohemian Theatre, Museum, Gallery etc.
- **Sports:**
  - Ice-hockey – top-league since the season 1950/51
  - Horses – Big Pardubice Steeplechase
  - Motorcycles – Golden Helmet





# The University of Pardubice

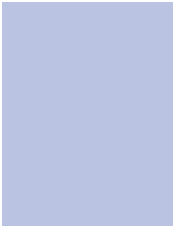
The University of Pardubice has been extending a sixty year long tradition of higher education in the town. The Chemical College, known for 40 years as the Institute of Chemical Technology, was founded in Pardubice in 1950 to answer the needs of the East-Bohemian region, which had a highly developed chemical industry, yet lacked professionally trained specialists in this field. After 1990, the character of the Institute changed, new faculties were founded offering a wide range of study programmes, not only chemistry-related. Since 1994, the new name – the University of Pardubice – has been used.

Today the University of Pardubice is a modern and dynamic public higher education institution, one of 26 in the Czech Republic, and the only higher university-type educational institution in the Pardubice Region. It has 7 faculties and 1 institute with over 10 thousand students in 60 undergraduate or postgraduate study programmes and more than 130 study specializations. It broadens the universal scale of scientific disciplines, and creates an open international community.



# Faculty of Transport Engineering

Faculty of Transport Engineering, named after a renowned 19th century railway engineer, began its activity in 1993. Today it is conceived as an institution of a multi-disciplinary character with economic-technological and technical specialization throughout the field of transport. It trains specialists for private and state transportation companies, electrotechnical, automobile and railway manufacturers, construction and business firms, research and project organizations, the public and education sector. These specialists are eligible to expertly engineer, organize and control technological processes in transport and postal systems, effectively communicate with customers and governing bodies, carry out acquisition, transportation, business and forwarding activities, ensure operation, maintenance, and renewal of road and railway transport means and infrastructure and investigate their influence on the environment, create computer information networks for traffic control, build electrical systems for safe road and railway traffic etc. The faculty participates in various projects from basic and applied research not only in the domestic field, but also in the field of international cooperation.



University  
of Pardubice  
Jan Perner  
Transport Faculty

# Department of Transport Management, Marketing and Logistics

The Department of Transport Management, Marketing and Logistics prepares students mainly for economic and organizational management of transport undertaking and organizations specializing in railway, road, and air transport. It also teaches communication between transporters and customers and solving related problems.

No	Course	ECTS	Level of Studies	Term
1	Logistic Management I	5	B, M, D	W/S
2	Economy and Management of Postal Services	5	B, M, D	W/S
3	Management of Travel Bureaus	4	M	W
4	Pricing in Transport	5	B, M, D	W
5	Logistic Management II	5	B, M, D	W/S
6	Leadership	4	B, M, D	S
7	Logistics	4	B, M	W/S

Legend:

B – Bachelor degree, M – Master degree, D – PhD studies  
W – Winter semester, S – Summer semester





## Department of Transport Means and Diagnostics

The Transport Means branch focuses on engineering, construction, and operation of transport means, especially rail and road vehicles. The Department of Transport Means consists of 3 sections: Section of Rail Vehicles, Section of Road Vehicles, and Section of Environmental Protection in Transport.

No	Course	ECTS	Level of Studies	Term
1	CAD I	4	B	W/S
2	The Selected Parts of Construction of Driving Railway Vehicles	3	M, D	W/S
3	Piston Internal Combustion Engines	6	B, M	W/S
4	Bases of Transport Technologies	4	B	S
5	Dynamic Strength and Service Life	6	M	S
6	Computing Methods in Design	5	M	W

Legend:

B – Bachelor degree, M – Master degree, D – PhD studies

W – Winter semester, S – Summer semester



# Department of Electrical and Electronic Engineering and Signalling in Transport

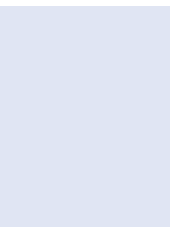
The Department of Electrical and Electronic Engineering and Signalling in Transport deals mainly with electric and electronic equipment connected with transport and communication. Electrical tradition, electric railway feeding, signalling equipment and systems, communication equipment and systems are the major objectives of the department's focus.

No	Course	ECTS	Level of Studies	Term
1	RF and Microwaves	5	B, M, D	W
2	Electrical Drives	5	B, M, D	W
3	Electromagnetics	5	B, M, D	W
4	Electrical Engineering	5	B, M, D	W/S
5	Power Electronics	4	B, M, D	W/S
6	Power Engineering	5	B, M, D	W/S
7	Introduction to Electronics	3	B	W/S
8	Traction System	4	B, M, D	W/S
9	Electrical Machines	4	B, M, D	S

Legend:

B – Bachelor degree, M – Master degree, D – PhD studies

W – Winter semester, S – Summer semester



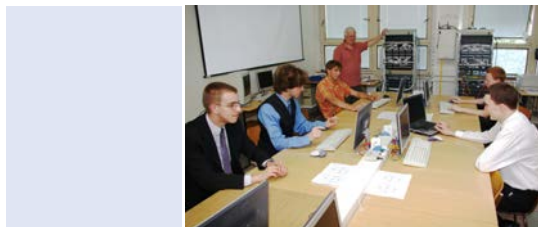
# Department of Informatics in Transport

The study programme is aimed towards educating professionals capable of realizing and operating information systems and their modules for the support of controlling, information and administrative activities.

No	Course	ECTS	Level of Studies	Term
1	Algorithm Development and Programming	6	B	W/S
2	Applied Mathematics	6	B, M, D	W/S
3	Building of Web-Pages	4	B	W/S
4	Calculus with Mathematical Software	6	B, M	W/S
5	Computer Networks I	5	B	W/S
6	Computer Technology	5	M	W/S
7	Database System	4	B	W/S
9	Graphic Editors	3	B	W/S
10	Introduction to Computers	5	B	W/S
11	Modelling and Simulation Using Mathematical Software	6	B, M	W/S
12	Numerical Methods Using Matlab	6	B, M, D	W/S
13	Statistical Software	5	B, M	W/S
14	Theory of Probability and Statistics	5	B	W/S

Legend:

B – Bachelor degree, M – Master degree, D – PhD studies  
W – Winter semester, S – Summer semester



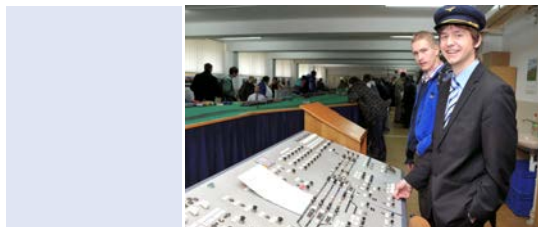
# Department of Transport Technology and Control

The department stipulates the study branch of Transport Technology and Control in a bachelor, master and doctoral study. Not only research activity, but also counselling and expert activity is provided for institutions and organizations in the field of transport and logistic technologies.

No	Course	ECTS	Level of Studies	Term
1	Principles of Railway Technology and Control	5	B	W
2	Theory of Transport I	6	B, M, D	W/S
3	Transport Modelling	5	B, M, D	W/S
4	Transport Technology and Control I	6	B, M, D	W
5	Air Traffic Rules	5	B, M, D	W
6	Technology and Control in Railway Transport	4	B	W/S
7	Cargo Transportation	4	B, M, D	W/S
8	Theory of Transport II	6	B, M, D	W/S
9	Transport Technology and Control II	6	B, M, D	S
10	Introduction to GIS	5	B, M	S
11	Progressive Systems of Intermodal Transport	5	B, M	W

Legend:

B – Bachelor degree, M – Master degree, D – PhD studies  
W – Winter semester, S – Summer semester



# Department of Mechanics, Materials and Machine Parts

The Department of Mechanics, Materials and Machine Parts deals with the development of scientific knowledge of material engineering, Finite Element Method (FEM), mechanics of materials, reliability and diagnostics of materials. The knowledge is mainly applied to transport means and transport structures.

No	Course	ECTS	Level of Studies	Term
1	Mechanics of Materials I	4	B, M, D	W/S
2	Reliability and Diagnostics	4	B, M, D	W/S
3	Finite Element Method I	4	B, M, D	W/S
4	Finite Element Method II	4	B, M, D	W/S
5	Corrosion and Surface Treatment	4	B, M, D	W/S
6	Mechanics	5	B	S
7	Mechanics of Materials 2	6	B, M, D	W/S
9	Engineering Technologies in Railway / Road Transport	4	B, M	S
10	Limit States of Materials	4	M, D	W/S
11	Materials Engineering	5	B, M	W/S
12	Selected Topics in Dynamics	5	M	W

Legend:

B – Bachelor degree, M – Master degree, D – PhD studies  
W – Winter semester, S – Summer semester





# Department of Transport Structures

The Department of Transport Structures offers a bachelor and a master study programme in Civil Engineering. Graduates of this accredited programme have comprehensive knowledge concerning design and construction of rail and road routes, engineering structures (such as bridges), geotechnical construction and underground engineering.

No	Course	ECTS	Level of Studies	Term
1	Steel Structures	5	M, D	W
2	Steel Bridges	5	M, D	S
3	Concrete Structures	6	B	W
4	Traffic Engineering	6	B, M	W
5	CAD Systems.	6	B	S
6	Structural Mechanics	6	B	W
7	Structural Analysis I	6	B	W
8	Structural Analysis II	6	B	S
9	Theory of Structures Reliability	8	M	S
10	Foundation Engineering	6	B, M	S
11	Design and Building of Road Constructions	6	B, M	S

Legend:

B – Bachelor degree, M – Master degree, D – PhD studies  
W – Winter semester, S – Summer semester



## Introduction to the Studies

- Academic year – two semesters; the winter semester starts in October, the summer semester in February/March

Holidays at the Czech Universities	
Winter holidays	24 <sup>th</sup> December – 1 <sup>st</sup> January
Summer holidays	3 <sup>rd</sup> July – 13 <sup>th</sup> August
Bank holidays in the Czech Republic	
New Years Day	1 <sup>st</sup> January
Easter Friday and Monday	Usually in April
May Day	1 <sup>st</sup> May
Liberation from Nazism	8 <sup>th</sup> May
St Cyril and Methodius, the Slavonic missionaries	5 <sup>th</sup> July
Jan Hus Day	6 <sup>th</sup> July
Day of Czech Statehood	28 <sup>th</sup> September
Day of establishment of the Czech State	28 <sup>th</sup> October
Day of Students' Fight for Freedom and Democracy	17 <sup>th</sup> November
Christmas holiday	24 <sup>th</sup> – 26 <sup>th</sup> December

Czech grade	Definition
1	excellent
1,5	excellent minus
2	very good
2,5	very good minus
3	good
4	failed



- Accommodation – Halls of Residence of the University of Pardubice consist of 9 buildings, 7 of them are within the main University campus.
- Student ID card – used for catering services in the dining room; lending services in the University library, printing and copying services

# Buddy system (ESN Pardubice)



Each Erasmus student gets assigned to a “buddy” – a Czech student of the University of Pardubice who is ready to provide help and assistance with various issues (arranging transport to Pardubice, getting to know the campus and town, dealing with Czech authorities etc.). The Buddy system team also organizes many cultural, social, and sports events throughout the year.





## **You need**

- 1) *Nomination letter sent by the coordinator of your institution*
- 2) *Online application form*
- 3) *Learning Agreement*
- 4) *Application for the student ID card*
- 5) *Copy of your ID card or passport*
- 6) *Proof of English language proficiency*

Deadlines for Application Forms		
Semester	Erasmus students	Exchange students who need visa
Winter	30 <sup>th</sup> June 2016	15 <sup>th</sup> May 2016
Summer	30 <sup>th</sup> November 2016	15 <sup>th</sup> October 2016



University  
of Pardubice  
Jan Perner  
Transport Faculty

*Kateřina Koubov*  
*University Erasmus Coordinator*  
*e-mail: [katerina.koubova@upce.cz](mailto:katerina.koubova@upce.cz)*  
*Website: [www.upce.cz/english/study/exchange-programmes.html](http://www.upce.cz/english/study/exchange-programmes.html)*

# Vocabulary

## Useful phrases

### Czech

*Dobré ráno*

*Dobrý den*

*Dobrý večer*

*Ahoj*

*Děkuju*

*Prosím*

*Nashledanou*

*Ano*

*Ne*

### English

*Good morning*

*Good day*

*Good evening*

*Hello*

*Thank you*

*Please*

*Goodbye*

*Yes*

*No*

## Other

### Czech

*Zkouška*

*Knihovna*

*Pošta*

*Lékárna*

*Nemocnice*

*Vlak*

*Hlavní nádraží*

*Autobus*

*WC, toaleta*

### English

*Exam*

*Library*

*Post office*

*Pharmacy*

*Hospital*

*Train*

*Main station*

*Bus*

*Toilet*

## Food and drinks

### Czech

*Oběd*

*Snídaně*

*Večeře*

*Voda*

*Pivo*

*Víno*

*Chleba*

*Ovoce*

*Džus*

*Zelenina*

*Mléko*

*Maso*

### English

*Lunch*

*Breakfast*

*Dinner*

*Water*

*Beer*

*Wine*

*Bread*

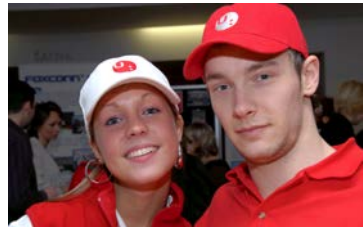
*Fruit*

*Juice*

*Vegetable*

*Milk*

*Meat*







*Hana Coufalová*  
*Faculty Erasmus Coordinator*  
*phone: +420 466 036 096*  
*e-mail: hana.coufalova@upce.cz*

*Kateřina Koubová*  
*University Erasmus Coordinator*  
*phone: +420 466 036 725*  
*e-mail: katerina.koubova@upce.cz*

*Website: <http://www.upce.cz/english/jptf/index.html>*

*Address*  
*Studentská 95*  
*532 10 Pardubice 2*  
*Czech Republic*

